


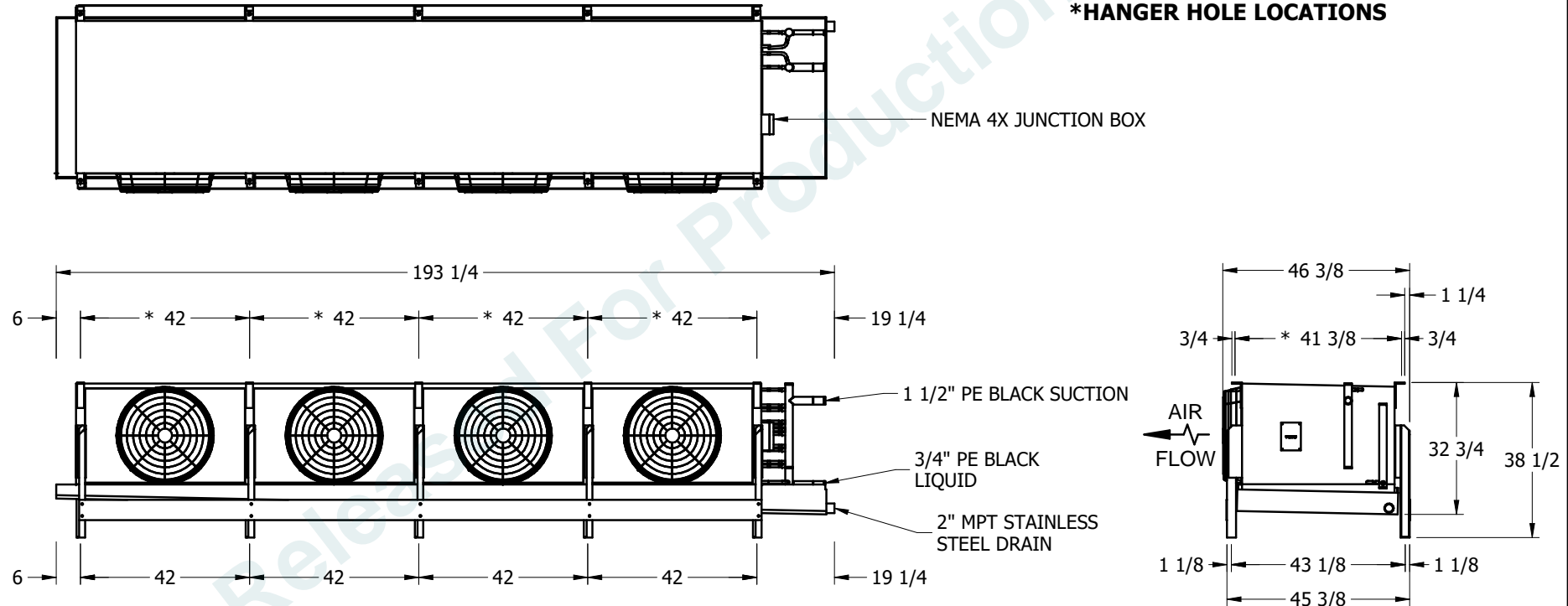
AHRI STANDARD RATING:		
169,847 BTUH	15,490 CFM	
R-717 REFRIGERANT	4.3 FPI 35°F SST 15°F TD	
2.4 HP (4) MOTORS	46.1°F WB [X] WET [] DRY	

CERTIFIED IN ACCORDANCE WITH THE AHRI UNIT COOLERS CERTIFICATION PROGRAM, WHICH IS BASED ON AHRI STANDARD 420. CERTIFIED UNITS MAY BE FOUND IN THE AHRI DIRECTORY AT WWW.AHRIDIRECTORY.ORG

NOTES:

- (1) ALL HANGER HOLES ARE 13/16Ø; LEGS ARE DESIGNED FOR SHIPPING AND REMOVED AT UNIT INSTALLATION.
- (2) THE EVAPORATOR CONNECTION SIZES (SHOWN) DO NOT NECESSARILY CORRESPOND TO THE APPROPRIATE SYSTEM PIPE SIZES.
- (3) DO NOT SCALE DRAWING. CONNECTION LOCATIONS ARE APPROXIMATE; DO NOT USE FOR FABRICATION OF PIPING.
- (4) 5.0 PSI LIQUID FEED PRESSURE REQUIRED ABOVE COIL SATURATED SUCTION PRESSURE.

***HANGER HOLE LOCATIONS**



QTY. 2	MODEL SSTME4-2864E0050C6LA	SERIAL NUMBER	20P101831-32	CERTIFIED FOR	PERMACOLD-PORTLAND	PROJECT	BLOUNT FINE FOODS
--------	----------------------------	---------------	--------------	---------------	--------------------	---------	-------------------

APPLICATION RATING:	[X] WET [] DRY
11.41 TONS (136,894 BTUH) @ 12°F TD	
45°F ROOM TEMP. 33°F SST 42.6°F WB	
R-717 REFRIGERANT	BOTTOM FEED
33°F LIQ. FEED TEMP. 1.2:1 RECIRC. RATE	
79 dBA @ 6 FT PER UNIT, FREE FIELD	

FAN/MOTOR DATA:
15,490 CFM @ 0" ESP
553 FPM FACE VELOCITY
(4) 0.5 HP TEAO FAN MOTOR(S)
1160 RPM 460/3/60 SERVICE
1.2 DESIGN MOTOR AMPS
22" FAN DIAMETER

PHYSICAL DATA:
14.92 ESTIMATED REFRIGERANT CHARGE
28.0 SQ. FT. FACE AREA
2.05 CU. FT. COIL VOLUME
6 ROWS DEEP 4.3 FPI
1,831 LBS. NORMAL OPERATING WEIGHT
1,608 LBS. SHIPPING WEIGHT

ROOM	45°F ROOM
REFERENCE	APP. VERSION
	6.1.0



P.O. Box 1300
Westminster, Maryland 21158 USA
Phone (410)756-2600
Fax (410)756-6450

REV: 1) 6/1/20 JGD DATE: 4/17/20 JGD

NOTES:

- (1) ALL HANGER HOLES ARE 13/16Ø; LEGS ARE DESIGNED FOR SHIPPING AND REMOVED AT UNIT INSTALLATION.
- (2) THE EVAPORATOR CONNECTION SIZES (SHOWN) DO NOT NECESSARILY CORRESPOND TO THE APPROPRIATE SYSTEM PIPE SIZES.
- (3) DO NOT SCALE DRAWING. CONNECTION LOCATIONS ARE APPROXIMATE; DO NOT USE FOR FABRICATION OF PIPING.
- (4) 5.0 PSI LIQUID FEED PRESSURE REQUIRED ABOVE COIL SATURATED SUCTION PRESSURE.

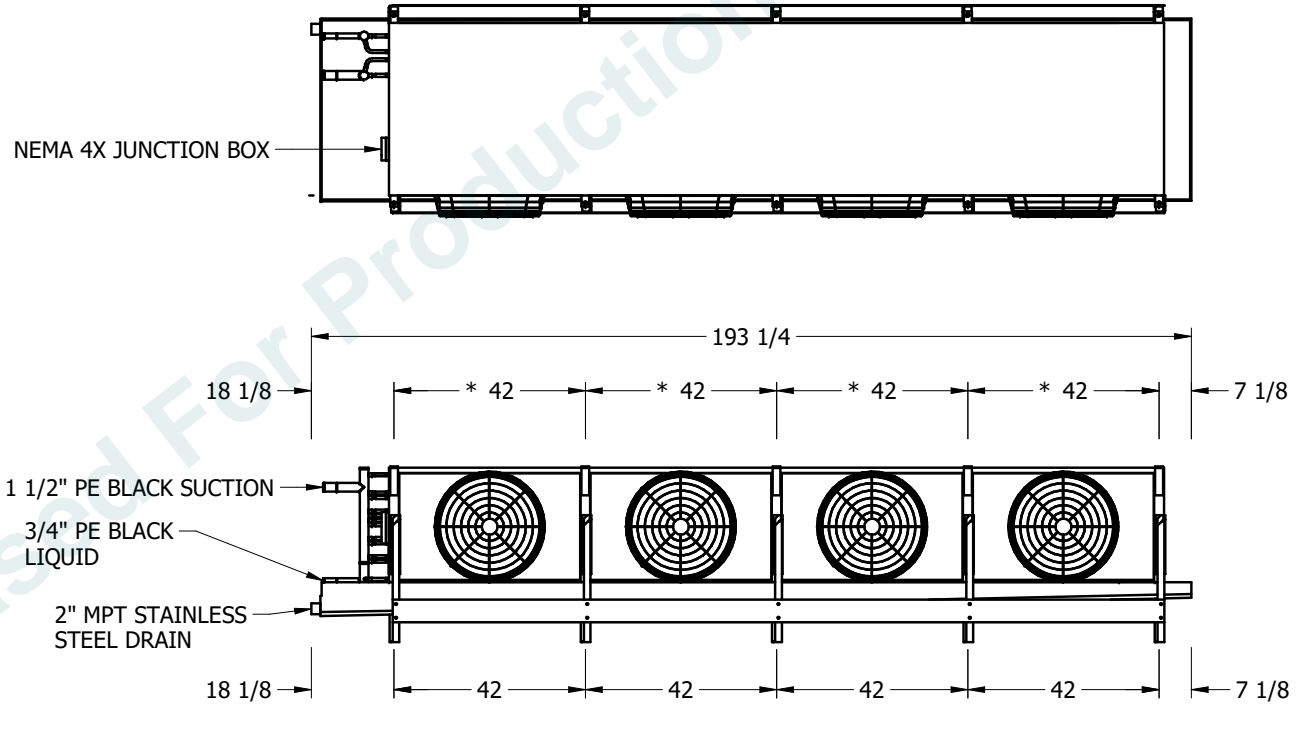
AHRI STANDARD RATING:

169,847 BTUH 15,490 CFM
 R-717 REFRIGERANT 4.3 FPI 35°F SST 15°F TD
 2.4 HP (4) MOTORS 46.1°F WB [X] WET [] DRY

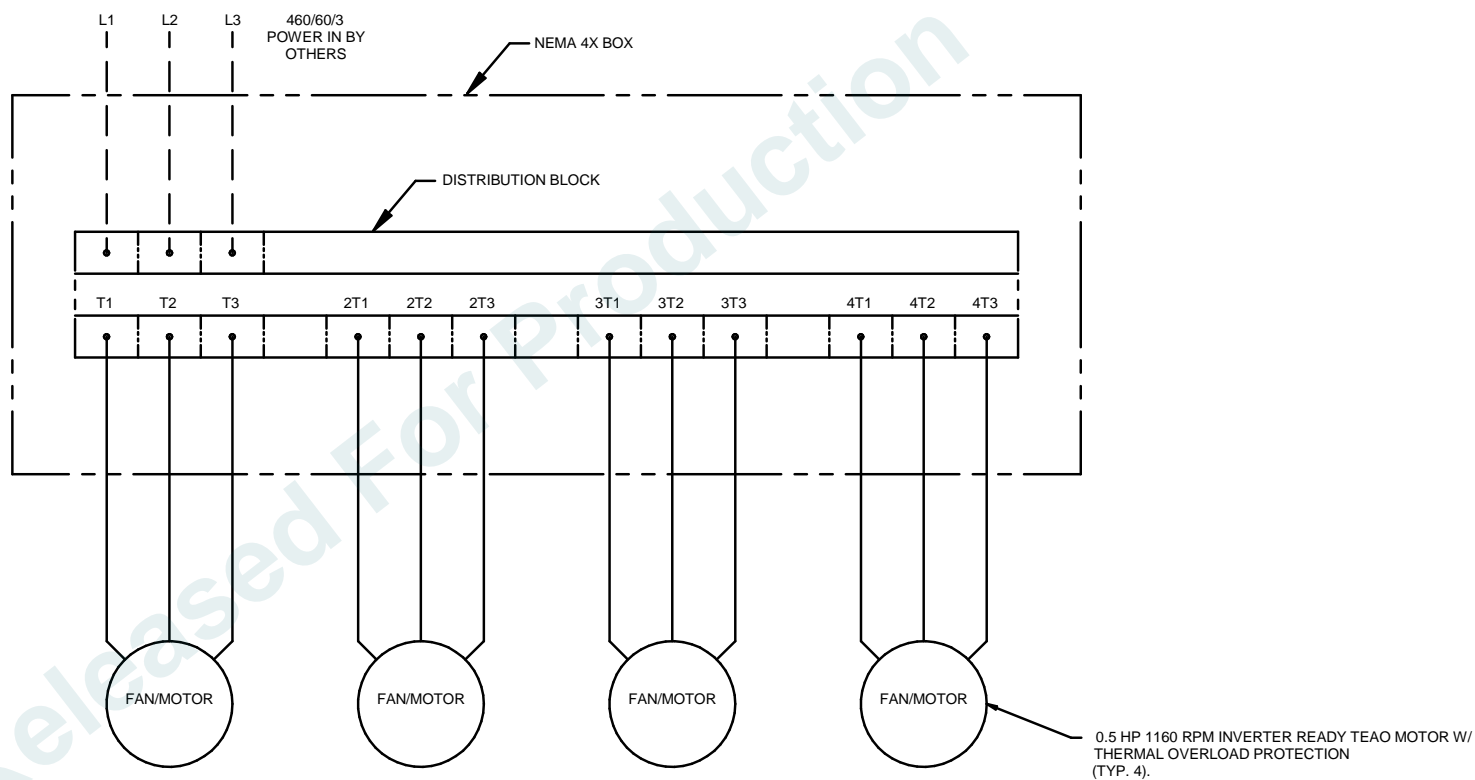


CERTIFIED IN ACCORDANCE WITH THE AHRI UNIT COOLERS CERTIFICATION PROGRAM, WHICH IS BASED ON AHRI STANDARD 420. CERTIFIED UNITS MAY BE FOUND IN THE AHRI DIRECTORY AT WWW.AHRIDIRECTORY.ORG

***HANGER HOLE LOCATIONS**



QTY. 2	MODEL SSTME4-2864E0050C6LA	SERIAL NUMBER 20P101833-34	CERTIFIED FOR PERMACOLD-PORTLAND	PROJECT BLOUNT FINE FOODS
APPLICATION RATING: [X] WET [] DRY 11.41 TONS (136,894 BTUH) @ 12°F TD 45°F ROOM TEMP. 33°F SST 42.6°F WB R-717 REFRIGERANT BOTTOM FEED 33°F LIQ. FEED TEMP. 1.2:1 RECIRC. RATE 79 dBA @ 6 FT PER UNIT, FREE FIELD		FAN/MOTOR DATA: 15,490 CFM @ 0" ESP 553 FPM FACE VELOCITY (4) 0.5 HP TEAO FAN MOTOR(S) 1160 RPM 460/3/60 SERVICE 1.2 DESIGN MOTOR AMPS 22" FAN DIAMETER		PHYSICAL DATA: 14.92 ESTIMATED REFRIGERANT CHARGE 28.0 SQ. FT. FACE AREA 2.05 CU. FT. COIL VOLUME 6 ROWS DEEP 4.3 FPI 1,831 LBS. NORMAL OPERATING WEIGHT 1,608 LBS. SHIPPING WEIGHT
REMARKS: STAINLESS STEEL EMBOSSED TUBE, ENHANCED ALUMINUM FIN COIL, G-235 GALVANIZED STEEL CASING, STAINLESS STEEL INNER AND OUTER PAN ONLY, AIR DEFROST, PREMIUM EFFICIENCY INVERTER READY MOTORS, END DRAIN				ROOM 45°F ROOM REFERENCE APP. VERSION 6.1.0 P.O. Box 1300 Westminster, Maryland 21158 USA Phone (410)756-2600 Fax (410)756-6450 REV: 1) 6/1/20 JGD DATE: 4/17/20 JGD



--- DASHED LINES REPRESENT
WIRING BY OTHERS

— SOLID LINES REPRESENT
WIRING BY EVAPCO

QTY. 4	MODEL SSTME4-2864E0050C6LA	SERIAL NUMBER 20P101831-34	CERTIFIED FOR PERMACOLD-PORTLAND	PROJECT Blount Fine Foods
CONFIDENTIAL This document is the property of Evapco, Inc. It should not be copied or disclosed without prior written authorization.			TITLE ELECTRICAL SCHEMATIC	DRAWN BY JGD CHECKED BY

EVAPCO, INC.