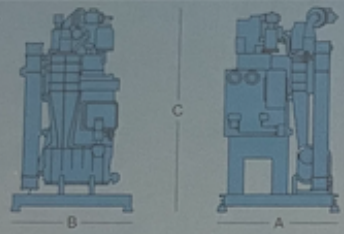
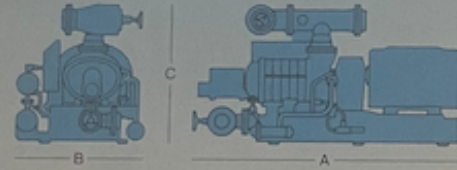
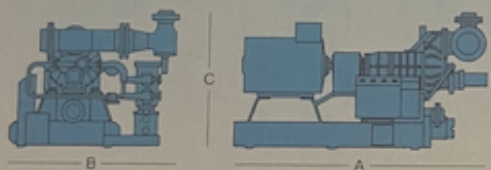
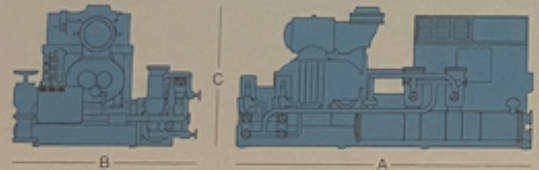


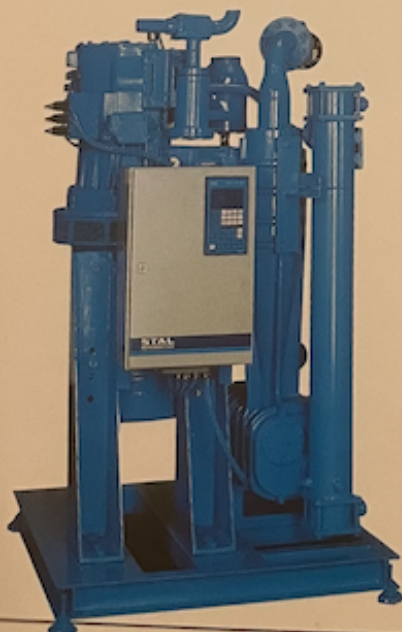
STAL has one of the market's most comprehensive screw compressor programmes. The following table lists the

approximate dimensions and weights. The diagrams provide capacity data for NH₃ and R22, with and without economizer.

Stal-Mini* has also been included to provide a complete picture of our programme – a programme meeting every need.

	Compressor unit	Swept volume (2950 rpm) m ³ /h	Dimensions			Operating weight kg
			Length A m	Width B m	Height C m	
Stal-Mini* 	RV 53/55	245/288	1.1	1.1	2.1	1,300
	RV 57/59	345/412	1.1	1.1	2.1	1,300
	SV 24	500	1.4	1.3	2.3	1,700
	SV 26	700	1.4	1.3	2.6	2,200
Stal-Maxi 	SV 51	850	2.8	1.5	1.5	2,400
	SV 57	1,290	2.9	1.5	1.5	2,500
Stal-Maxi 	SV 71	1,680	3.0	2.1	1.8	3,500
	SV 73	2,500	3.2	2.1	1.8	3,800
	SV 75	3,900	3.6	2.1	1.8	4,300
Stal-Maxi 	SV 93	5,750	4.6	2.8	2.1	6,600

*For further information, see separate brochure.



RV 55



SV 57