

GENERAL NOTES

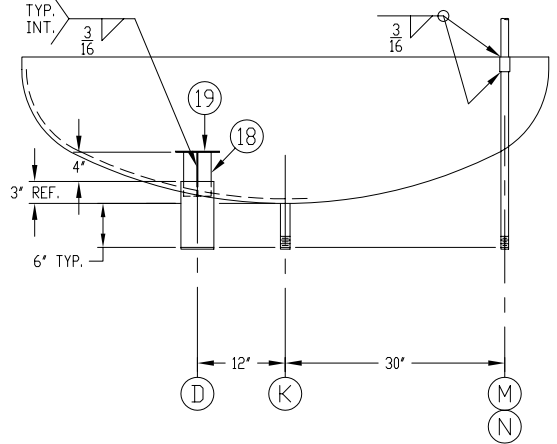
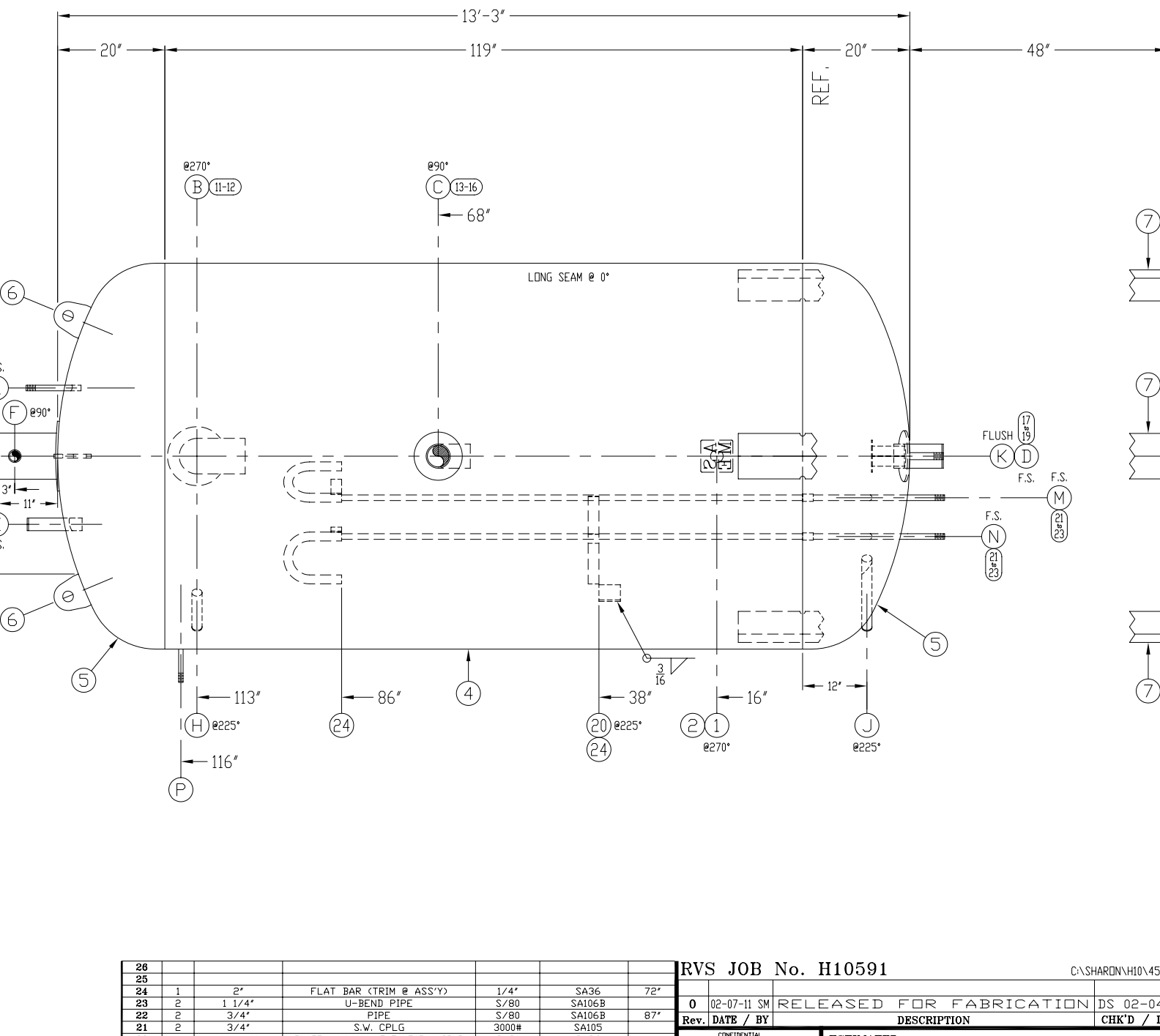
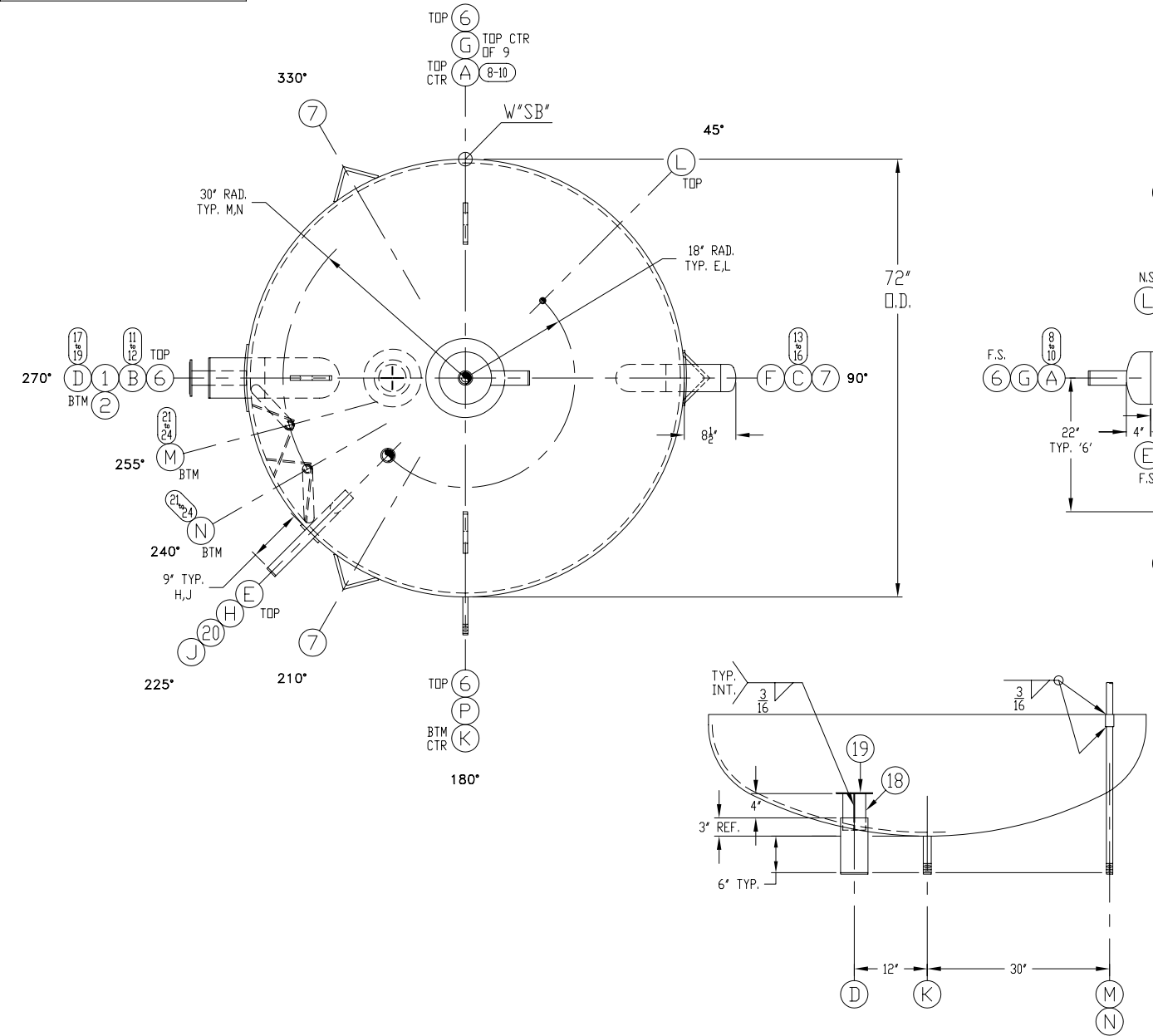
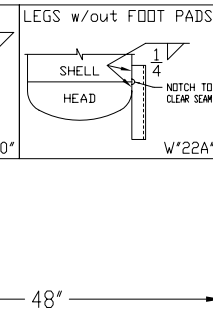
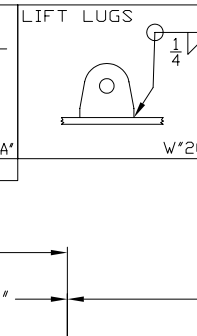
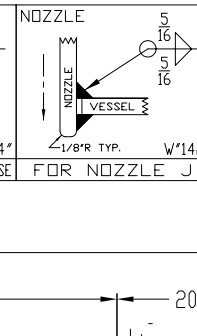
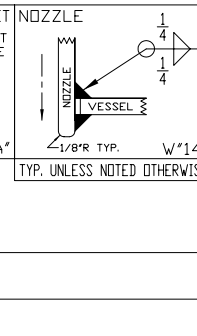
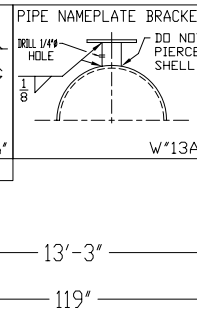
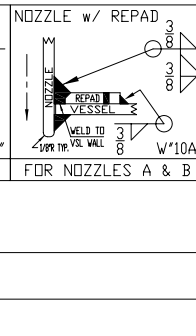
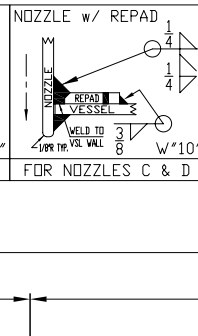
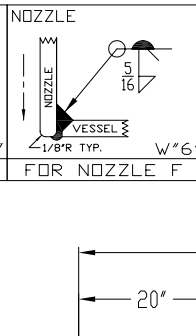
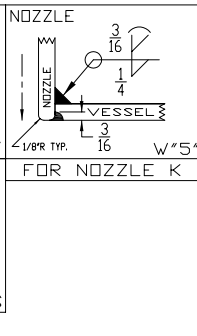
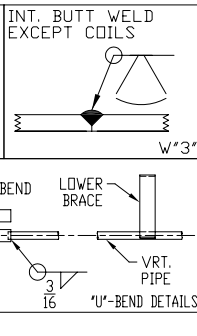
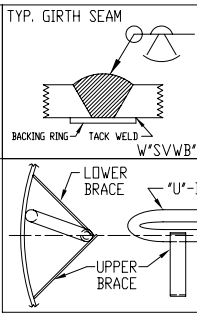
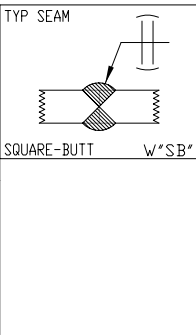
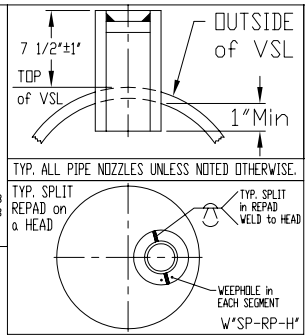
- 1) SA53B SMLS PIPE MAY BE SUBSTITUTED FOR SA106B SEAMLESS PIPE.
- 2) SA516-70 PLATE MAY BE SUBSTITUTED FOR SA36 PLATE.
- 3) FABRICATION TOLERANCES PER R.V.S. SHOP PROCEDURE No. T-701.
- 4) ALL BOLT HOLES STRADDLE CENTERLINES.
- 5) ALL CPL'GS EXTEND INSIDE FOR WELDING UNLESS NOTED OTHERWISE.
- 6) ALL WELDS: CARBON STL. TO CARBON STL. WPS-1-1 STAINLESS STL. TO STAINLESS STL. WPS-8-8 CARBON STL. TO STAINLESS STL. WPS-1-8
- 7) ALL HOLES SHALL BE DRILLED.

TYP. SPLIT REPAD on a HEAD

DO NOT LOCATE SPLIT IN THIS REGION

LONG AXIS OF SHELL

VEEPHOLE IN EACH SEGMENT W*SP-RP*



| ITEM | QTY | SIZE | TYP | RATING | MATERIAL | SERVICE | LENGTH | ITEM | QTY | SIZE | TYP | RATING | MATERIAL | LENGTH |
|------|-----|-------------|-----|--------|----------|---|--------|------|-----|--------------------|-----|--------|----------|--------|
| 26 | 1 | 2" | | | | FLAT BAR (TRIM @ ASS'Y) | 72" | 16 | 1 | 4" | | | SA36 | |
| 25 | 1 | 1 1/4" | | | | U-BEND PIPE | | 15 | 1 | 4" | | | SA106B | |
| 24 | 2 | 3/4" | | | | PIPE | 87' | 14 | 1 | 4" | | | SA36 | |
| 23 | 2 | 3/4" | | | | S.W. CPLG | | 13 | 1 | 9" OD x 4 3/4" ID | | | SA106B | |
| 22 | 2 | 3/4" | | | | S.W. CPLG | | 12 | 1 | 6" | | | SA105 | |
| 21 | 2 | 3/4" | | | | S.W. CPLG | | 11 | 1 | 11" OD x 6 7/8" ID | | | SA105 | |
| 20 | 1 | 4" x 4" | | | | PLATE w/ 1/4" HOLE NEAR A CRNR | | 10 | 1 | 8" | | | SA36 | |
| 19 | 1 | 6" x 6" | | | | PLATE | | 9 | 1 | 8" | | | SA36 | |
| 18 | 2 | 3 3/4" x 6" | | | | PLATE (VORTEX) | | 8 | 1 | 13" OD x 8 7/8" ID | | | SA36 | |
| 17 | 1 | CUSTOM | | | | 2 1/2" MIN. WIDE PLATE w/ 1/4" WEEPHOLE | | 7 | 3 | 6" x 6" | | | SA36 | |

| | | | |
|-------------------------------|-------------|--------------------------|-----------------------|
| RVS JOB No. H10591 | | C:\SHARDON\H10\45779D | |
| 0 | 02-07-11 SM | RELEASED FOR FABRICATION | DS 02-04-11 |
| Rev. | DATE / BY | DESCRIPTION | CHK'D / DATE |
| ESTIMATED SHIPPING DIMENSIONS | | WIDTH: 83" | HEIGHT: 87" |
| | | LENGTH: 19'-5" | DRY WEIGHT: 8,385 LBS |

SHOP NOTE:
TEST VESSEL VERTICAL WITH FIRST VALVES INSTALLED

UW RT3

CERTIFIED BY
REFRIGERATION VALVES and SYSTEMS CORPORATION
BRYAN, TEXAS

MAXIMUM ALLOWABLE WORKING PRESSURE
250 PSI AT 300 °F

MAX. ALLOWABLE EXTERNAL WORKING PRESSURE
X PSI AT X °F

MINIMUM DESIGN METAL TEMPERATURE
-20 °F AT 250 PSI

S/N 45779 YEAR 2011

SHELL THK HEAD THK U.S. GAL. SQ.FT. SURF.

TEST WITH WATER

HYDRO NOTES:

- 1) ESTIMATED VOLUME: 2,591 GALLONS.
- 2) TEST WITH NOZZLE K ON BOTTOM.

BILL of MATERIALS

| NOZZLE SCHEDULE | | | | | | SHELL, HEADS, INTERNALS, & SUPPORTS | | | | | | |
|-----------------|-----|--------|---------------|--------------|----------|-------------------------------------|-----|--------------------|-----|--------|----------|--------|
| ITEM | QTY | SIZE | TYP | RATING | MATERIAL | ITEM | QTY | SIZE | TYP | RATING | MATERIAL | LENGTH |
| R | 1 | 1 1/2" | PIPE (T.O.E.) | S/80 | SA106B | 16 | 1 | 4" | | | SA36 | |
| Q | 1 | 1 1/2" | PIPE (T.O.E.) | S/80 | SA106B | 15 | 1 | 4" | | | SA36 | |
| P | 1 | 1 1/2" | PIPE (T.O.E.) | S/80 | SA106B | 14 | 1 | 4" | | | SA36 | |
| N | 1 | 3/4" | PIPE (T.O.E.) | S/80 | SA106B | 13 | 1 | 9" OD x 4 3/4" ID | | | SA106B | |
| M | 1 | 3/4" | PIPE (T.O.E.) | S/80 | SA106B | 12 | 1 | 6" | | | SA106B | |
| L | 1 | 3/4" | PIPE (T.O.E.) | S/80 | SA106B | 11 | 1 | 11" OD x 6 7/8" ID | | | SA106B | |
| K | 1 | 1" | PIPE (T.O.E.) | S/80 | SA106B | 10 | 1 | 8" | | | SA36 | |
| J | 1 | 1 1/2" | PIPE | S/160 (281°) | SA106B | 9 | 1 | 8" | | | SA36 | |
| H | 1 | 1 1/2" | PIPE | S/80 | SA106B | 8 | 1 | 13" OD x 8 7/8" ID | | | SA36 | |
| G | 1 | 2" | PIPE | S/80 | SA106B | 7 | 3 | 6" x 6" | | | SA36 | |
| F | 1 | 2" | PIPE | S/80 | SA106B | 6 | 3 | 6" STD | | | SA36 | |
| E | 1 | 2" | PIPE | S/80 | SA106B | 5 | 1 | 72" O.D. | | | SA36 | |
| D | 1 | 4" | PIPE | S/40 | SA106B | 4 | 1 | 72" O.D. | | | SA36 | |
| C | 1 | 4" | PIPE | S/40 | SA106B | 3 | 2 | 1 1/2" | | | SA36 | |
| B | 1 | 6" | PIPE | S/40 | SA106B | 2 | 1 | 2" | | | SA36 | |
| A | 1 | 8" | PIPE | S/40 | SA106B | 1 | 1 | 6" x 6" | | | SA36 | |

CUSTOMER ARCTIC REFRIGERATION P.O. 0735-439

VESSEL DESIGN SPECIFICATIONS

DESIGN & CONSTRUCTION IN ACCORDANCE WITH SECTION VIII DIV. 1 ASME CODE FOR PRESSURE VESSELS 2007 EDITION & ADDENDA TO 2009b

SHELL: t = 5/16" CA: 0

HEADS: t = 5/16" .533" MIN. AFTER FORMING CA: 0

M.A.W.P.: 250 P.S.I. HYDROTEST: 325 P.S.I.

RT: LONG SPOT / GIRTH: NONE HT: NONE

PAINT: SANDBLAST SSPC-SP6, SEE NOTE

TITLE
72" O.D. x 13'-3" 250# ASME VRT. H.P. RECEIVER

DRAWN SHARON 02-03-11 SCALE: 1" = 1'-0"

CHK'D DS 02-04-11 S/N: 45779

DWG No. 45779D REV. 0

REFRIGERATION VALVES and SYSTEMS CORPORATION
A WHOLLY OWNED SUBSIDIARY OF EVAPCO INC.

PACKAGED VESSEL SYSTEMS and CONTROLS
1520 CROSSWIND DRIVE, BRYAN, TX. 77808