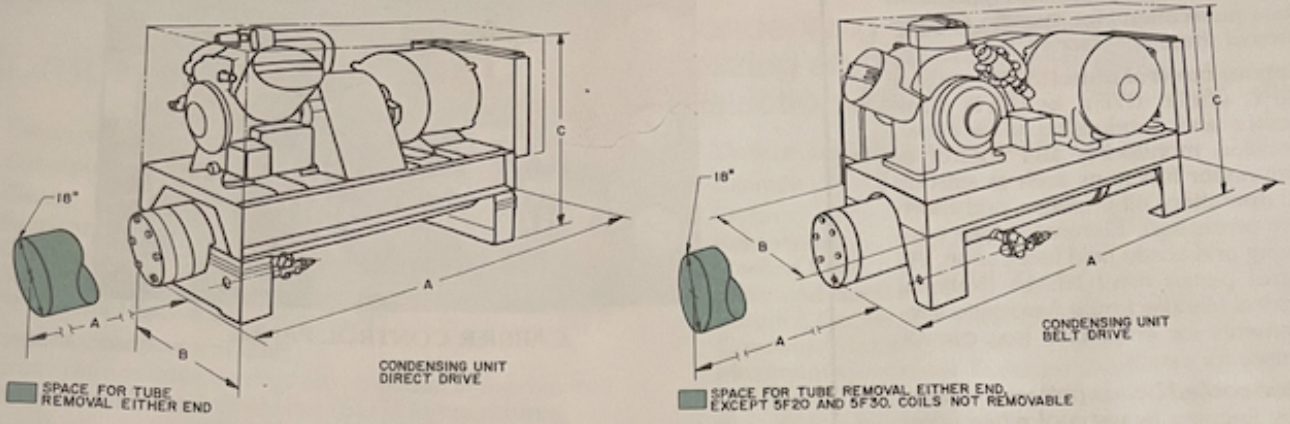


### CONDENSING UNIT DIMENSIONS



### CONDENSING UNITS

DRIVE	BELT (07FY, HY)															
COMPR	5F20				5F30				5F40				5F60			
COND	20	30	30	40	60	5H40		5H60		5H80						
WT (lb)	515	555	590	1090	1360	1845	2085	2055	2295	2520	3120	3180	3515	3820		
A	4-1	4-3	4-3	6-1	7-0	7-3	7-6	7-3	7-6	8-10	8-10	8-10	9-2	11-2		
B	*	*	*	*	*	2-9†	2-9†	2-11†	2-11†	2-11†	3-10	3-10	3-10	3-10		
C	3-7	3-7	3-7	4-0	4-9	5-0	5-2	5-2	5-3	5-3	5-5	5-5	5-5	5-5		

COMPR	5H120			
COND	054	070	084	097
WT (lb)	3720	3795	4085	4370
A	8-10	8-10	9-2	11-2
B	4-0	4-0	4-0	4-0
C	5-6	5-6	5-6	5-6

DRIVE	DIRECT (07FY, HY)												
COMPR	5F40		5F60		5H40		5H46			5H60			
COND	40	60	027	027	043	043	054	070	043	054	070	084	
WT (lb)	1010	1190	1515	1735	2020	2020	2155	2225	2155	2320	2870	2930	
A	6-1	7-0	7-3	7-3	7-6	7-6	8-10	8-10	7-6	8-10	8-10	9-2	
B	*	*	*	*	*	*	*	*	2-5†	2-5†	2-5†	2-8†	
C	3-11	4-10	5-0	5-0	5-2	5-2	5-2	5-2	5-3	5-3	5-3	5-6	

COMPR	5H66				5H80				5H86			
COND	054	070	084	097	054	070	084	097	070	084	097	127
WT (lb)	2320	2870	2930	3235	3060	3120	3445	3750	3120	3445	3750	4360
A	8-10	8-10	9-2	11-2	8-10	8-10	9-2	11-2	8-10	9-2	11-2	9-3
B	2-5†	2-5†	2-8†	2-8†	2-7†	2-7†	2-10†	2-10†	2-7†	2-8†	2-8†	2-11†
C	5-3	5-3	5-6	5-7	5-5	5-5	5-5	5-5	5-5	5-5	5-6	5-10

COMPR	5H120				5H126	
COND	070	084	097	127	097	127
WT (lb)	3700	4000	4260	4870	4260	4870
A	8-10	9-2	11-2	9-3	11-2	9-3
B	2-6†	2-8†	2-8†	2-11†	2-8†	2-11†
C	5-7	5-7	5-7	5-10	5-7	5-10

\*Width dependent on control panel used. If a 32CE panel is used, width is 2 ft-4 in. (28 in.). If a 32DE panel is used, width is 3 ft-4 in. (40 in.).  
 †Width is as shown if a 32CE control panel is used. If a 32DE panel is used, width required is 3 ft-4 in. (40 in.).

NOTES:  
 1. Weights do NOT include motor.  
 2. A, B, and C are dimensions (ft-in.) and, as shown, are approximate. Refer to Submittals for detailed dimensions.