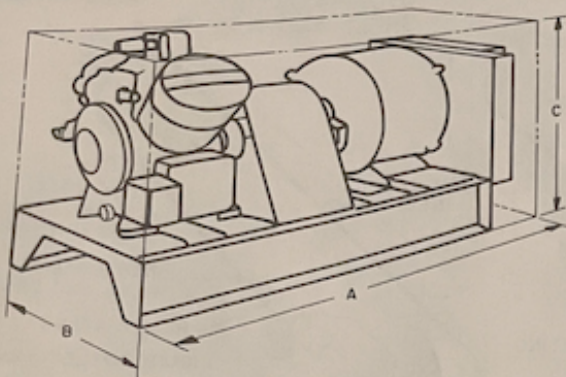
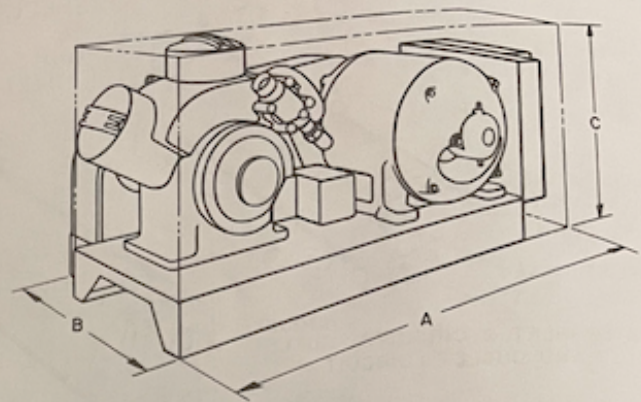


Physical data and dimensions (cont)



COMPRESSOR UNIT, DIRECT DRIVE (DD)



COMPRESSOR UNIT, BELT DRIVE (BD)

COMPRESSOR	5F				5H				5H			
	20	30	40	60	40	60	80	120	46	66	86	126
OPER WT (lb)												
BD	390	430	645	730	1045	1225	1780	2345	—	—	—	—
DD	—	—	610	695	1010	1195	1840	2340	1010	1195	1840	2340
COMPRESSOR												
Nom Hp	3-10	5-15	7.5-20	10-30	20-50	30-75	40-100	60-150	40-60	60-100	75-125	125-200
Displ Cfm at 1750 Rpm	19.0	29.8	39.8	59.6	92.4	138.4	184.7	276.8	115.5	173.0	231.0	346.0
Cylinders	2	3	4	6	4	6	8	12	4	6	8	12
Oil (pt)	5	5.5	12	13	18	21	41	61	18	21	41	61
Bore (in.)	2½				3¼							
Stroke (in.)	2				2¼				3⅞			
Max Rpm	1750											
Min Rpm	400 (Required for proper lubrication)											
Min Rpm, Cap. Control	600	700	800	900	800	900	1100	900	800	900	1100	900
High-Side Max Pressure	400 psig											
Low-Side Max Pressure	245 psig											
DIMENSIONS (in.)												
BD	A	4-0	4-1	4- 8	4- 8	5-7	5- 8	7- 5	7-6	—	—	—
	B	*	*	2- 3†	2- 3†	2-9†	2-10†	3-10	4-0	—	—	—
	C	3-7	3-7	3- 7	4- 2	4-4	4- 5	4- 6	4-6	—	—	—
DD	A	—	—	4-10	4-11	5-8	5- 9	7- 2	7-6	5-8	5-9	7-2
	B	—	—	*	*	2-1†	2- 4†	2- 8†	2-8†	2-1†	2-4†	2-8†
	C	—	—	3- 2	4- 2	4-4	4- 6	4- 7	4-7	4-4	4-6	4-7

D — Belt Drive
D — Direct Drive

Width is dependent on control panel used. If a 32CE control panel is used, the width is 2 ft-4 in. (28 in.). If a 32DE control panel is used, the width is 3 ft-4 in. (40 in.).

Height is as shown if a 32CE control panel is used. If a 32DE control panel is used, width required is 3 ft-4 in. (40 in.).

NOTES:

1. Weights do NOT include motor.
2. Dimensions shown are approximate. Refer to submittals for detailed dimension information.