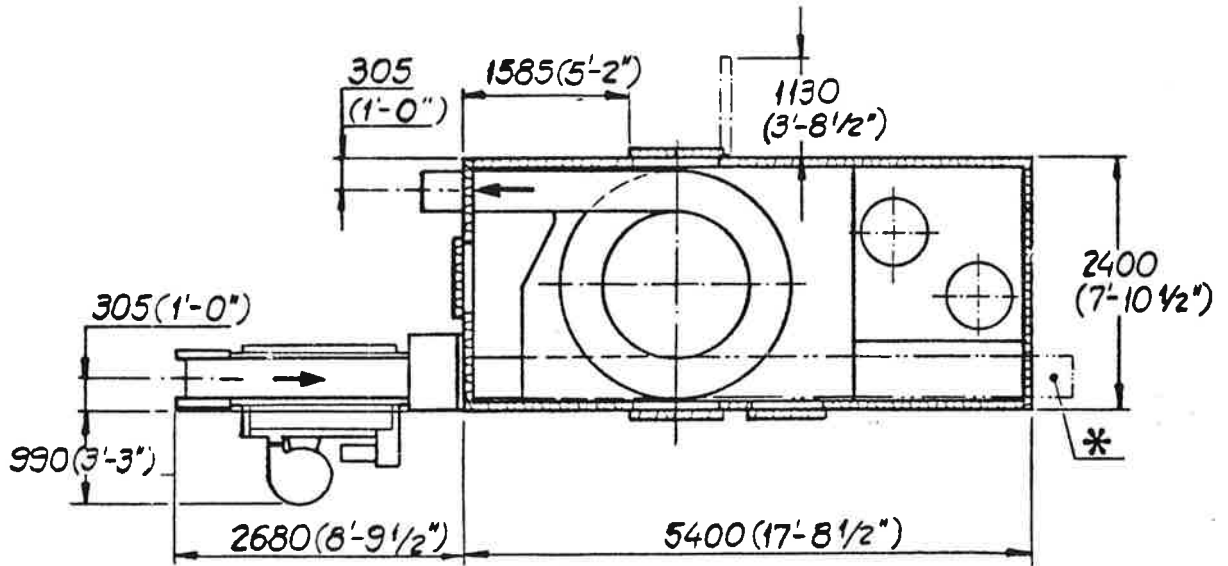
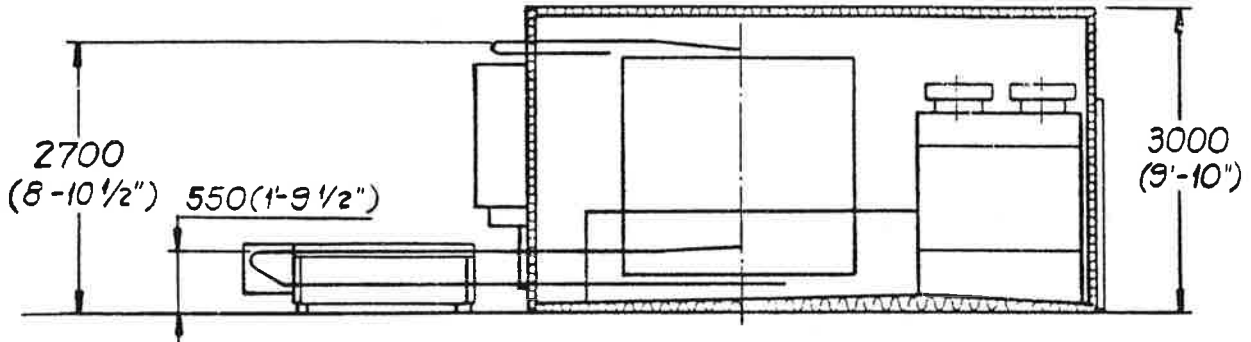


Manual	
0047-1-004-A	1/1
Oct. 1985	*

Freezer Division

GYRoCOMPACT P 42 H

Dimensions



* N-S layout

GYROCOMPACT P 42

 Technical Data. Lay-out NS and NN. Single vertical airflow. SI-Units

Model		GC P 42			GC P 42 H		
		Std.	Optional		Std.	Optional	
Link height	mm	60	40	90	60	40	90
Vertical clearance for product	mm	45	25	75	45	25	75
Number of tiers	Qty	23	34	16	33	49	22
Belt type		FRIGOBELT, stainless with mesh					
Belt width, total	mm	420					
Belt width, net	mm	375					
Belt length per tier	m	6,8					
Effective belt area per tier	m ²	2,1					
Belt speed and holding time		Theoretical ly variable 2 - 18 m/min. upper limit to meet product requirements)					
Voltage		3 x 380 V or 3 x 415 V, 50 Hz, 3 x 440 V, 60 Hz					
Normal power consumption**	kW	13 kW (std.), 17 kW (700 m ² coil)					
Max. power requirement**	kVA	15,6 kVA std., 19,8 kVA (700 m ² coil)					
Motors of more than 1 kW rating**		1 x 1,5 kW + 2 x 4 kW (std.), 1 x 1,5 kW + 3 x 4 kW (700 m ² coil)					
<u>Refrigeration</u>							
Standard design		Ammonia. Pump circulation ratio = 4 - 6 times evap. (R22, pump circulation ratio = 3 times evap.)					
Standard evap. temp.	°C	Suction at evaporator -40°C. Ammonia (-43°C R22)					
Base load***	kW	22 (std.) or 26 (700 m ² coil)					
	kcal/h	19.000 (std.) or 22.000 (700 m ² coil)					
<u>Coil volume</u>	lit.						
Coil surface:							
500 m ² (Std.)		245					
700 m ² (optional only for N=N lay-out)		320					
<u>Defrosting system</u>		Water or hot gas (pneumatic defrost optional)					
Water consumption****	l/min.	300					
Water temperature	°C	Min. temp. +15					
<u>Belt washer (optional)</u>							
Normal power consumption	kW	4,5					
Water consumption	l/min.	55					
Water temperature	°C	+65					

* N=N lay-out has 1/2 tier less than N-S lay-out with same model designation.

** Excluding belt washer.

*** Required refrigeration capacity minus product heat (excluding belt thawing)

**** Pressure of 300 kPa (3 kp/cm²) min. pressure 200 kPa (2 kp/cm²).

