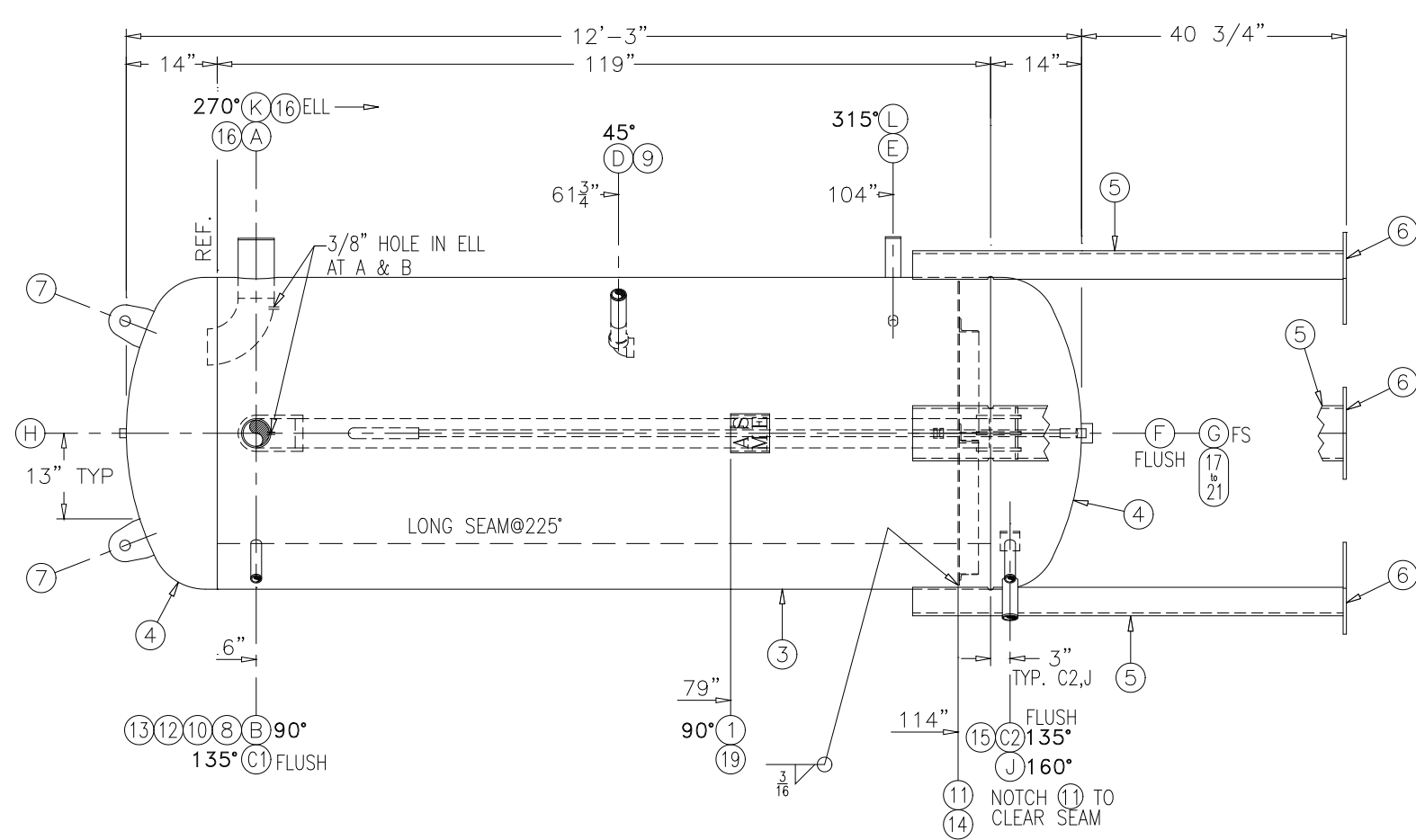
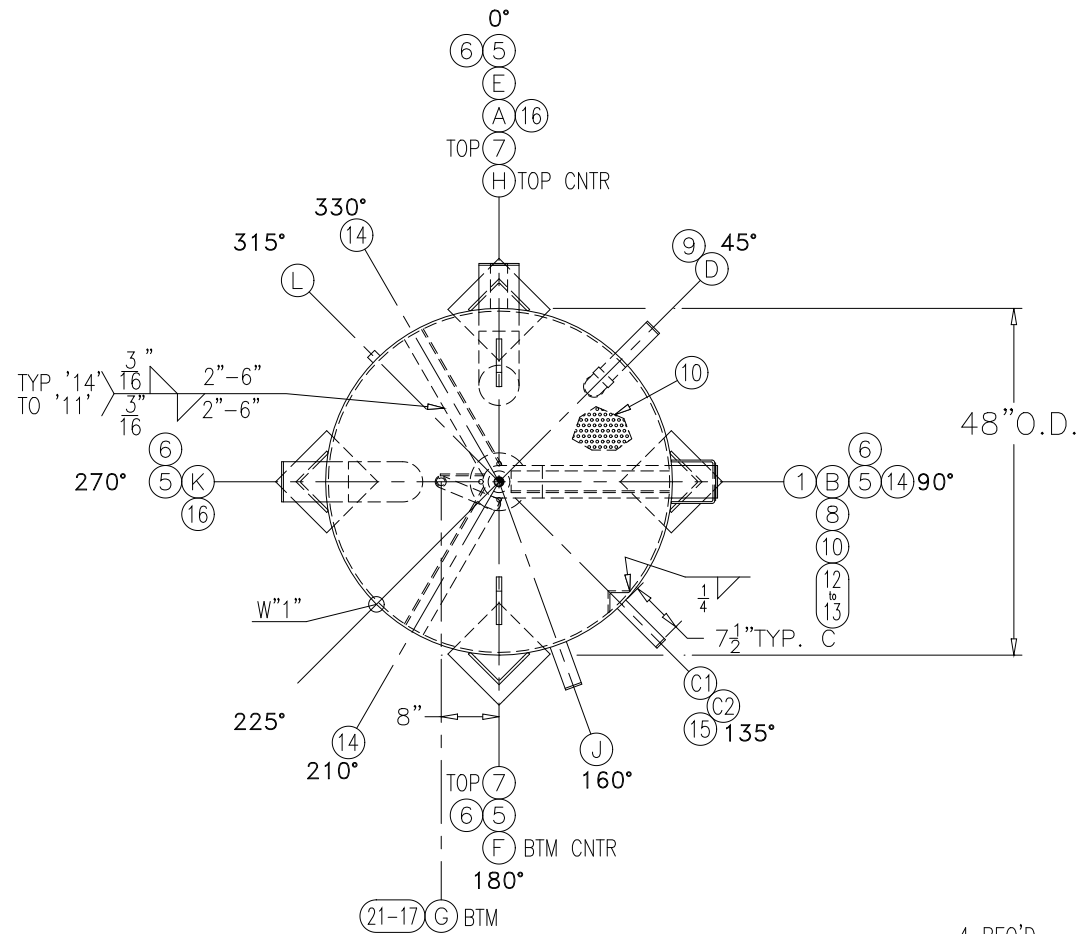
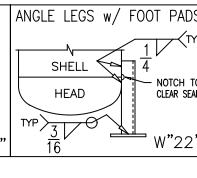
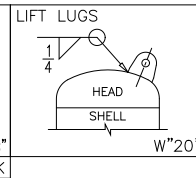
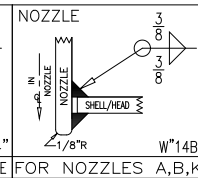
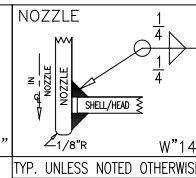
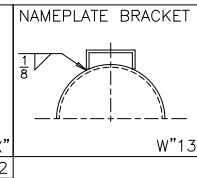
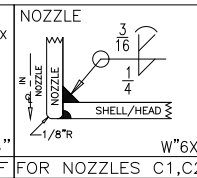
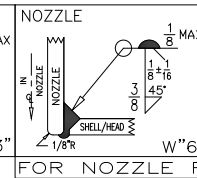
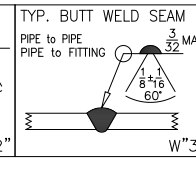
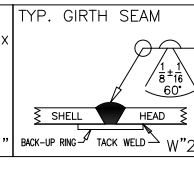
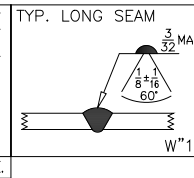
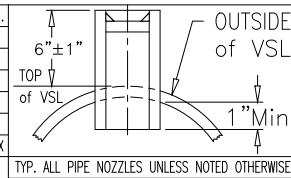


- GENERAL NOTES**
- SA53B SMLS PIPE MAY BE SUBSTITUTED FOR SA106B SEAMLESS PIPE.
 - SA516-70 PLATE MAY BE SUBSTITUTED FOR SA36 PLATE.
 - FABRICATION TOLERANCES PER R.V.S. SHOP PROCEDURE No. T-701.
 - ALL BOLT HOLES STRADDLE CENTERLINES.
 - ALL CPL'GS EXTEND INSIDE FOR WELDING UNLESS NOTED OTHERWISE.

PROCESS	WPS No.	ELECTRODE
GTAW	109	ER70S-2
SMAW	1002	E7018
FCAW	1005	E71T-1
GMAW-S	2002	ER70S-3
SAW	4004	L56 WIRE/880M FLUX



NOZZLE (G) DETAIL

DISCHARGE BAFFLE DETAIL

RVS JOB No. E70631

CERTIFIED

C:\SUSAN\E7\43138

Rev.	DATE	DESCRIPTION	APR'V'D / DATE
2	SG 12-21-07	40 3/4" WAS 12"	DS 12-21-07
1	SG 12-17-07	REVISED PER CUSTOMER/APPR'V'D & REL'D FOR FABRICATION	DS 12-17-07
0	DGB 11-26-07	SENT FOR APPROVAL	

SHIPPING DIMS: 62" W1 x 62" H1 x 13'-6" LNG x 3,420 Lbs DRY

CUSTOMER: **THE SUMMIT GROUP P.O. 8034**

VESSEL DESIGN SPECIFICATIONS

DESIGN & CONSTRUCTION IN ACCORDANCE WITH SECTION VIII DIV. 1 ASME CODE FOR PRESSURE VESSELS 2004 EDITION & ADDENDA TO 2006

REFRIGERATION VALVES and SYSTEMS CORPORATION
A WHOLLY OWNED SUBSIDIARY OF EVAPOC INC.

SHELL: SA516-70 3/8" (.351" MIN.) CA: 0

HEADS: SA516-70 3/8" (.297" MIN.) 2:1 CA: 0

M.A.W.P.: 250 P.S.I. **HYDROTEST:** 325 P.S.I.

-20 TO 300 °F To DUAL STAMP 85 PSI @ -50 °F

RT: LONG: SPOT / GIRTH: SPOT HT: 1150±25° FOR 23 MIN.

PAINT: SANDBLAST SSPC-SP6, RVS BLUE PRIMER

TITLE

48" O.D. X 12'-3" ASME 250# VERT. INTERCOOLER

DRAWN DGB 11-26-07 **CHK'D** DS 11-26-07 **S/N:** 43138

BY: DJS 12-17-07 **SCALE:** 1" = 1'-0" Thru

DWG No. 43138 **REV.** 2

ITEM	QTY	SIZE	TYP	RATING	MATERIAL	SERVICE	LENGTH	ITEM	QTY	SIZE	TYP	RATING	MATERIAL	SERVICE	LENGTH
21	1	3/4"			PIPE	S/80	SA106B	18"							
20	1	3/4"			S.W. CPLG	3000#	SA105								
19	1	2"			FLAT BAR	1/4"	SA36	8"							
18	1	1 1/4"			U-BEND PIPE	S/80	SA106B								
17	1	3/4"			PIPE	S/80	SA106B	79 1/2"							

BILL of MATERIALS

NOZZLE SCHEDULE						SHELL, HEADS, INTERNALS, & SUPPORTS												
ITEM	QTY	SIZE	TYP	RATING	MATERIAL	ITEM	QTY	SIZE	TYP	RATING	MATERIAL	ITEM	QTY	SIZE	TYP	RATING	MATERIAL	LENGTH
L	1	3/4"	CPLG	3000#	SA105	HYDRO TEST VENT	11	1	47'00 x 4 3/4" ID	40% OPEN PERF. PLATE(90#)	3/16"	SA36	66	1/4"				
K	1	5"	PIPE	S/80	SA106B	SUCTION INLET	10	1	4"	PIPE(96#)	S/40	SA106B	107"					
J	1	2"	PIPE	S/80	SA106B	LIQUID TRANSFER	9	1	2"	90° S.W. ELBOW	3000#	SA105						
H	1	3/4"	CPLG	3000#	SA105	RELIEF	8	1	4"	90° B.W. ELBOW	S/40	SA234-WPB	L.R.					
F	1	3/4"	LONG CPLG	3000#	SA105	OIL POT VENT	7	2	STD	LIFT LUG	3/4"	SA36	6"					
G	1	2"	CPLG	3000#	SA105	DRAIN	6	4	10"	FLAT BAR	1/2"	SA36	10"					
E	1	2"	PIPE	S/80	SA106B	LIQUID OUTLET	5	4	6" X 6"	ANGLE	3/8"	SA36	66	1/4"				
D	1	2"	PIPE	S/80	SA106B	LIQUID MAKE-UP	4	2	48" O.D.	2:1 ELLIP. HEAD (331#)	3/8"	SA516-70						
C	2	1 1/4"	PIPE	S/80	SA106B	LEVEL COLUMN	3	1	48" O.D.	ROLLED SHELL (1892#)	3/8"	SA516-70	119"					
B	1	4"	PIPE	S/80	SA106B	BOOSTER DISCHARGE	2	2	1 1/2"	BACKING STRIP	1/8"	SA36	151"					
A	1	5"	PIPE	S/80	SA106B	SUCTION OUTLET	9	1	6" TALL	STD NAMEPLATE BRACKET		SA36	6"					

TEST WITH WATER

- HYDRO NOTES:**
- ESTIMATED VOLUME: 1088 GAL.
 - TEST WITH NOZZ. 'C' ON BTM.

U CERTIFIED BY REFRIGERATION VALVES and SYSTEMS CORPORATION BRYAN, TEXAS

W MAXIMUM ALLOWABLE WORKING PRESSURE 250 PSI AT 300 °F

RT# X PSI AT X °F

HT MINIMUM DESIGN METAL TEMPERATURE -20 °F AT 250 PSI -50 °F

S/N 43138 YEAR 2008

SHELL THK HEAD THK U.S. GAL. SO.FT. SURF.

RVS